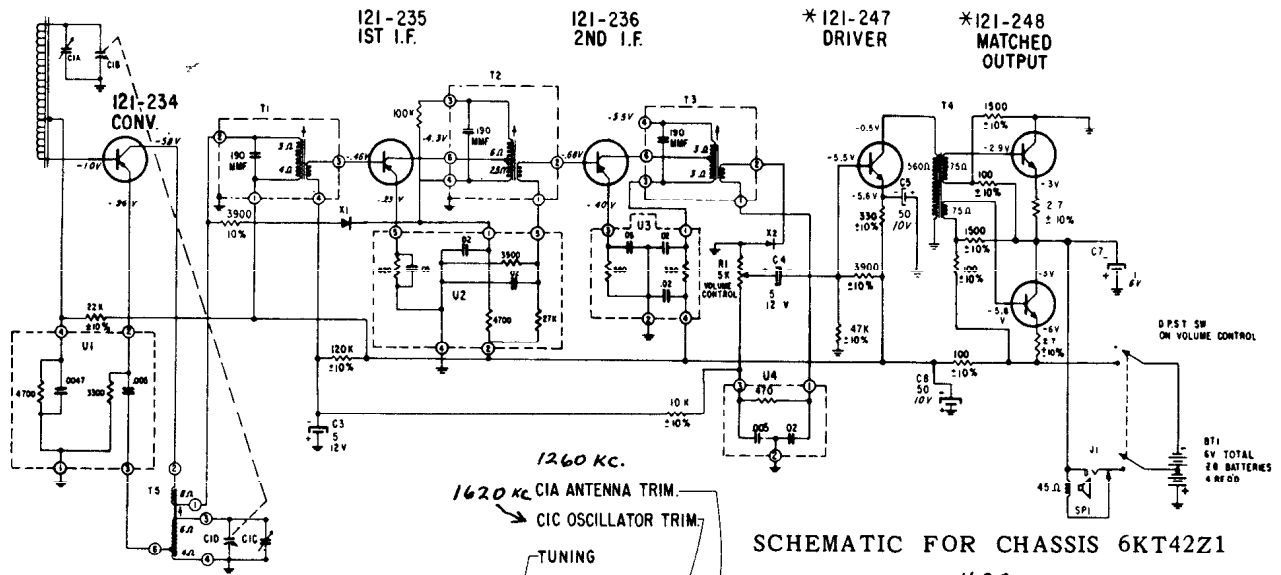


ZENITH Models 265, 645, 670, Chassis 6KT41Z1, 6KT42Z1, 6KT45Z1



SCHEMATIC FOR CHASSIS 6KT42Z1

NOTES:  
 ALL RESISTORS ARE CARBON, 1/2 WATT, ±20% TOLERANCE UNLESS OTHERWISE SPECIFIED.  
 ALL VOLTAGES ARE D.C. UNLESS OTHERWISE SPECIFIED.  
 ALL CAPACITORS ARE 1% MICROFARADS UNLESS OTHERWISE SPECIFIED.  
 D.C. VOLTAGES SHOWN ARE MEASURED FROM CHASSIS WITH NO SIGNAL USING A VACUUM TUBE VOLTMETER  
 \* DENOTES CHASSIS 12

BATTERY CURRENT DRAIN APPROX. 4.5 MA WITH VOLUME CONTROL AT HIGH FREQ.  
 \*SPEAKER IMPEDANCE 22Ω AT 400 CPS

T5 COLOR CODE

D	4	0
0	3	
D	4	3

DRIVER	MATCHED OUTPUT
121-247	121-248
VIOLET	BLACK
BLACK	VIOLET
WHITE	BLUE

\* THE MATCHING IDENTIFICATION WILL BE A COLORED DOT.  
 THE MATCHING OF TRANSISTORS WILL BE AS INDICATED IN THE ABOVE CHART

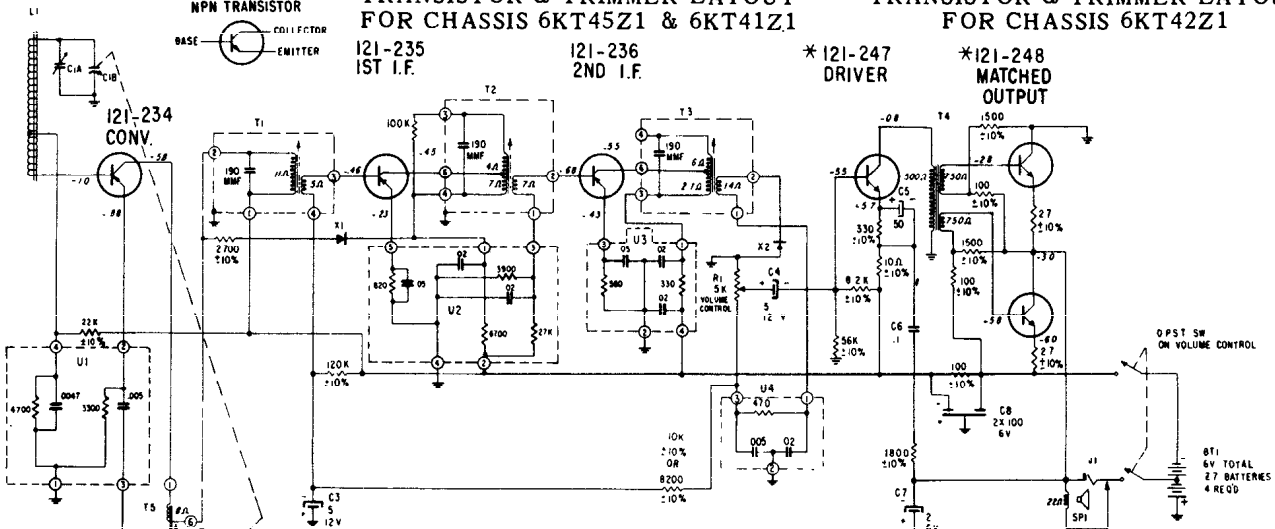
PNP TRANSISTORS



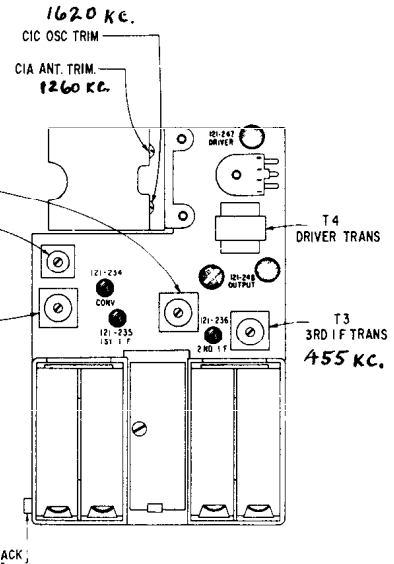
455 Kc. T2 2ND I.F. TRANS.  
 600 Kc. T5 OSCILLATOR TRANS.  
 455 Kc. T1 1ST I.F. TRANS.  
 T3 3RD I.F. TRANS.

TRANSISTOR & TRIMMER LAYOUT FOR CHASSIS 6KT45Z1 & 6KT41Z1

121-235 1ST I.F.  
 121-236 2ND I.F.  
 \*121-247 DRIVER  
 \*121-248 MATCHED OUTPUT



SCHEMATIC FOR CHASSIS 6KT45Z1 & 6KT41Z1



TRANSISTOR & TRIMMER LAYOUT FOR CHASSIS 6KT42Z1

