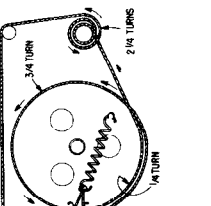
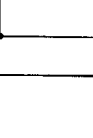
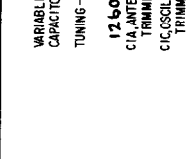
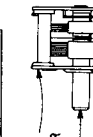
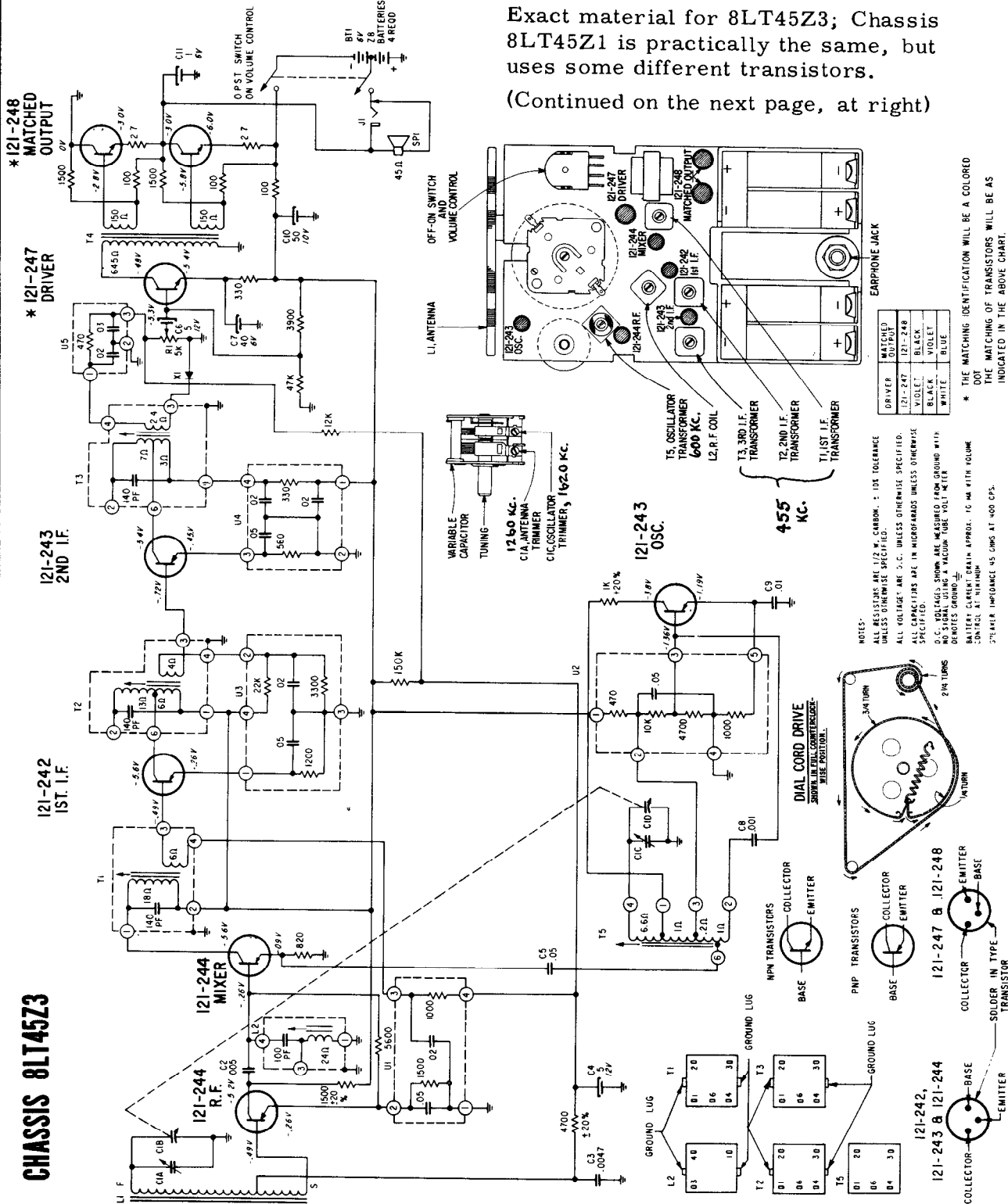


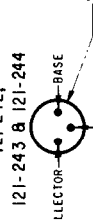
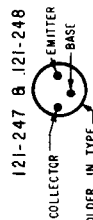
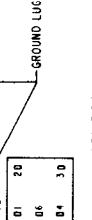
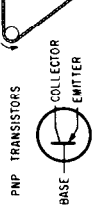
# ZENITH RADIO CHASSIS 8LT45Z1 & 45Z3 MODEL "ROYAL 500L"

Exact material for 8LT45Z3; Chassis 8LT45Z1 is practically the same, but uses some different transistors.  
(Continued on the next page, at right)



DRIVER	MATCHED OUTPUT
121-247	121-248
BLACK	VIOLET
BLACK	BLACK
WHITE	BLUE

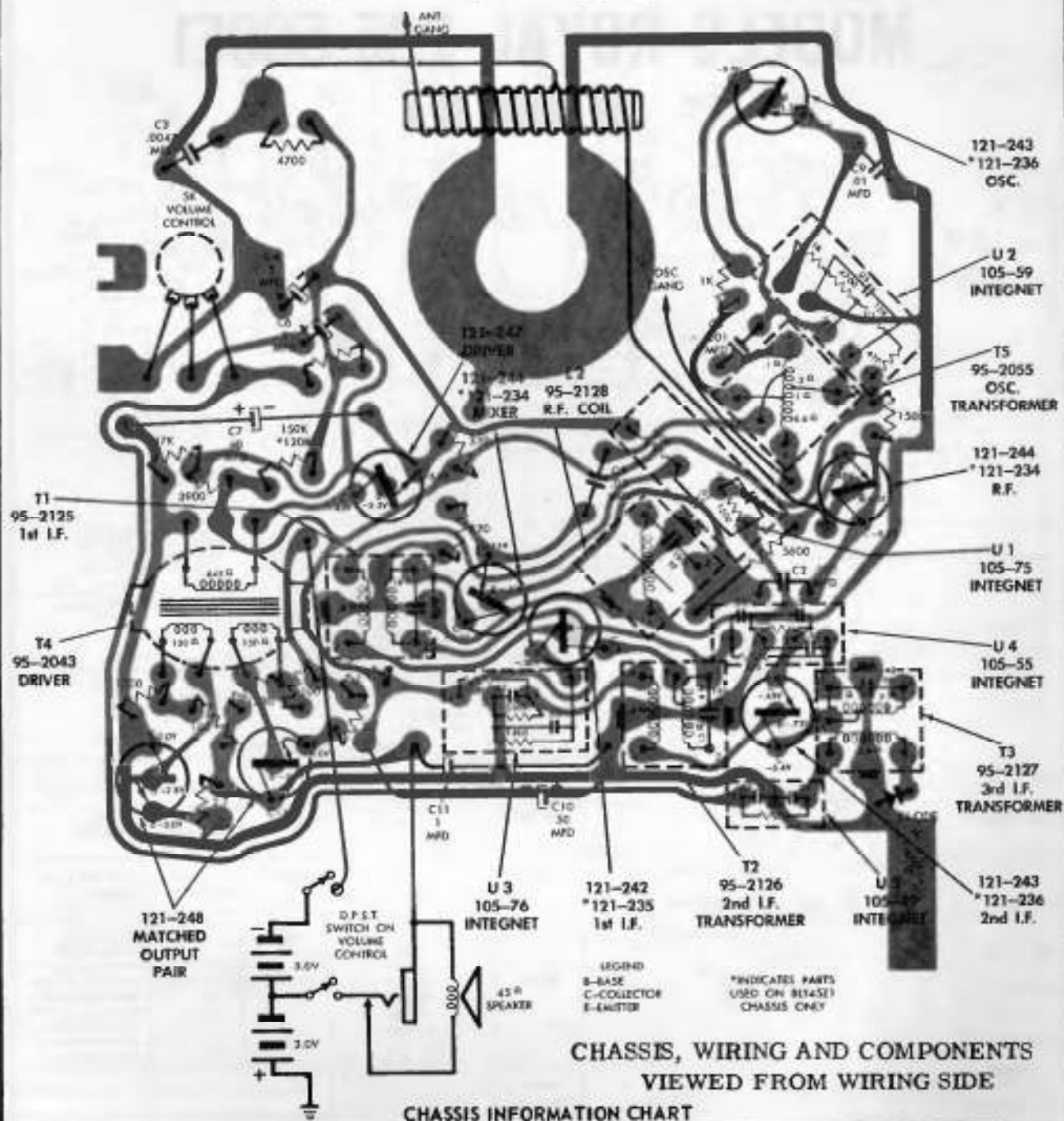
NOTES:  
 ALL RESISTORS ARE 1/2 W. CARBON, ± 10% TOLERANCE UNLESS OTHERWISE SPECIFIED.  
 ALL VOLTAGE ARE D.C. UNLESS OTHERWISE SPECIFIED.  
 ALL CAPACITORS ARE IN MICROFARADS UNLESS OTHERWISE SPECIFIED.  
 D.C. VOLTAGES SHOWN ARE MEASURED FROM GROUND WITH NO SIGNAL USING A VACUUM-TUBE VOLTMETER.  
 ⚡=HOTTER THAN GROUND.  
 ⚡=SPEAKER CURRENT DRAIN APPROX. 70 MA WITH VOLUME CONTROL AT MAXIMUM.  
 ⚡=SPEAKER IMPEDANCE 45 OHMS AT 400 CPS.



\* THE MATCHING IDENTIFICATION WILL BE A COLORED THE MATCHING OF TRANSISTORS WILL BE AS INDICATED IN THE ABOVE CHART.

VOLUME R-25, MOST-OFTEN-NEEDED 1965 RADIO SERVICING INFORMATION

ZENITH RADIO Chassis 8LT45Z1, 8LT45Z3, Model "Royal 500L"  
(Continued from preceding page, at left)



CHASSIS INFORMATION CHART

Chassis	Part No.	R. F.	Mixer	Osc.	1st I.F.	2nd I.F.	Crystal Diode Detector	Driver	Output	Supplier
8LT45L1	Zenith Type E.I.A.	121-234 PNP GC282	121-234 PNP GC282	121-236 PNP GC284	121-235 PNP GC284	121-236 PNP GC284	103-19 or 103-44	121-247 NPN GC608	121-248 Matched Pair NPN NPN GC609	Texas Instrument
8LT45Z3	Zenith Type E.I.A.	121-244 PNP 2N993	121-244 PNP 2N993	121-243 PNP 2N993	121-242 PNP 2N993	121-243 PNP 2N993	Same as Above	Same as Above	Same as Above	Amperex